



**meter.ie** is Temetra's customer portal giving end-users direct access to their meter readings, and visually displaying their consumption with the aim of encouraging conservation.



High usage consumers such as hotels and schools already use **meter.ie** to see their usage patterns and statistics, downloading consumption data for further analysis.



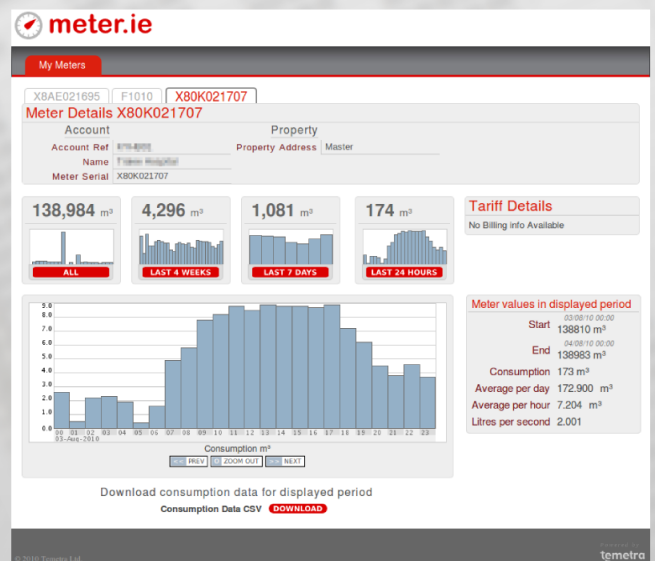
**CUSTOMER PORTAL**

**meter.ie** allows Local Authorities to give their water and heat consumers direct access to meter readings, whether from basic eyeball meter readings, through low power wireless AMR, all the way to 15 minute interval data via GSM network.



**National Smart Meter Plan**

For industrial and commercial gas consumers, Temetra operates this service on behalf of Bord Gáis Networks, as part of the National Smart Metering Plan.



At a glance views of historic consumption, with the ability to zoom in and out, allowing users to understand their usage patterns and quickly identify anomalies.



# meter.ie



## P2G

P2G integrates a data logger, a GSM modem and safety isolation into a single unit. The internal GSM modem assures reliable data communication as a part of an AMR or an M&T system for industrial electricity, gas and water metering. P2G belongs to a new generation of professional communicators based on integrated intelligent i2-GSMTM modem technology developed by Iskraemeco. The P2G communicator is ATEX approved and manufactured in compliance with BS EN 60079 and ISO 9001.



## P2W

P2W is a data logger, a GSM modem and antenna packaged in a single enclosure rated to IP68. The internal GSM modem assures reliable data communication by means of SMS messages as a part of an AMR or an M&T system for industrial water metering. P2W belongs to a new generation of professional communicators based on integrated intelligent i2 GSMTM modem technology developed by Iskraemeco. The unit is manufactured in compliance with ISO 9001 and designed according to Iskraemeco's strict standards.